

ICONIC
REAL ESTATE

FOR LEASE

5,335 SQUARE FEET



NEW PROPOSED
RETAIL DEVELOPMENT

CONTACT

JACOB SWORSKI

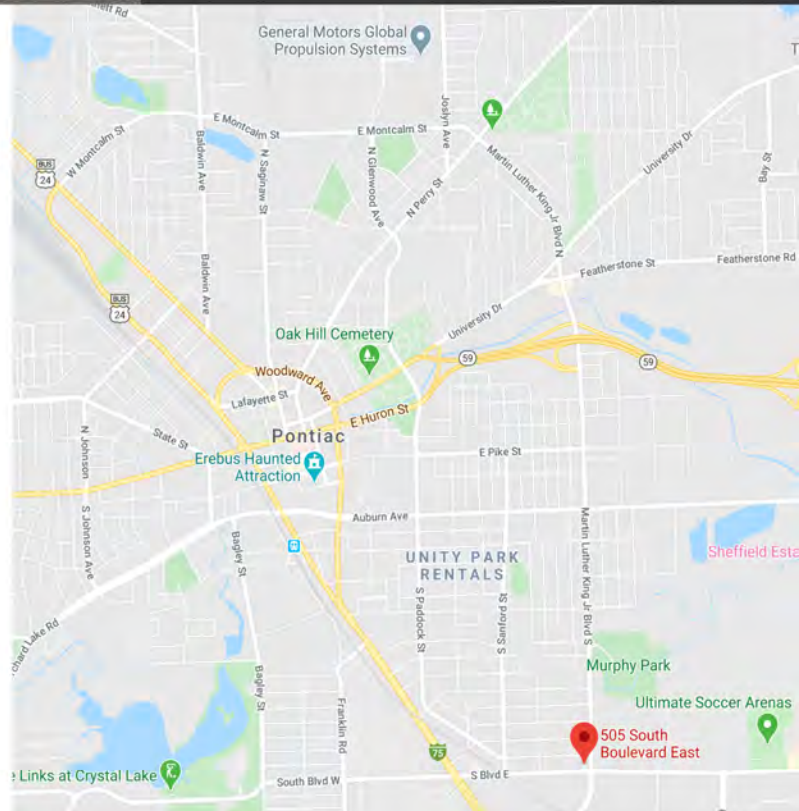
Jacob@ICONICdet.com

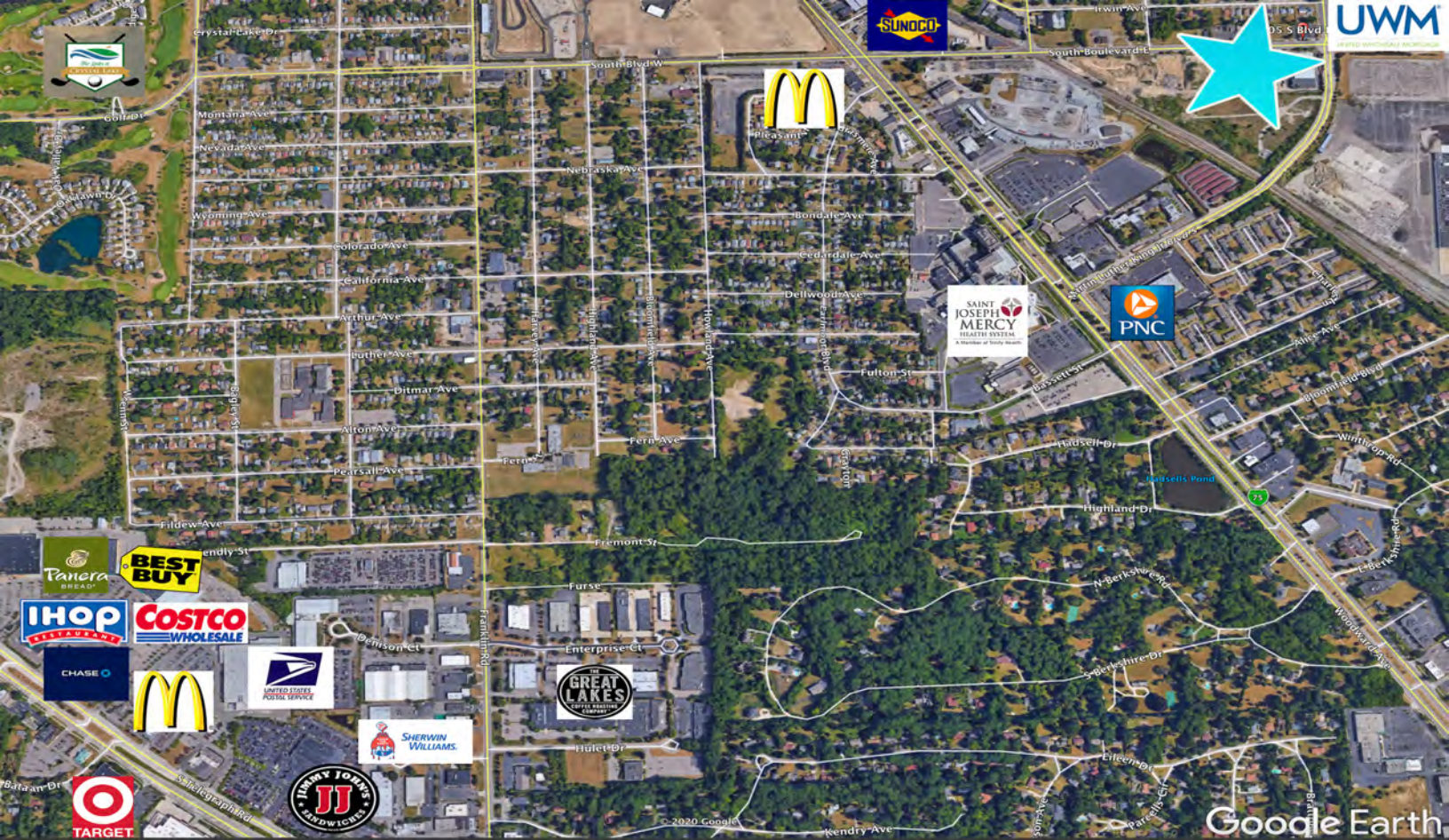
313.603.ICON

505 SOUTH BLVD E
PONTIAC, MI 48341

PROPERTY FEATURES

- New Proposed 9,000 SF Retail Development
- Centrally located and surrounded by New M1 Concourse Facility, Ultimate Soccer Arenas and over 7,000 Employees of United Shore Mortgage/Wholesale United
- Up to 5,335 SF Available
- Units from 1,100-5,335 SF
- One Mile West of Woodward Ave.
- Asking: \$18.00/SF NNN





DEMOGRAPHICS

DISTANCE	POPULATION	AVERAGE AGE	TOTAL HOUSEHOLDS	HH INCOME
1 MILE	6,832	38.50	2,746	\$31,155
3 MILE	69,113	39.90	27,426	\$48,322

DAILY TRAFFIC COUNTS

ROADS

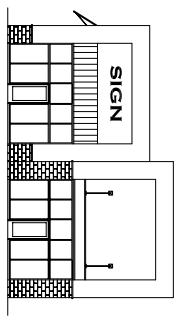
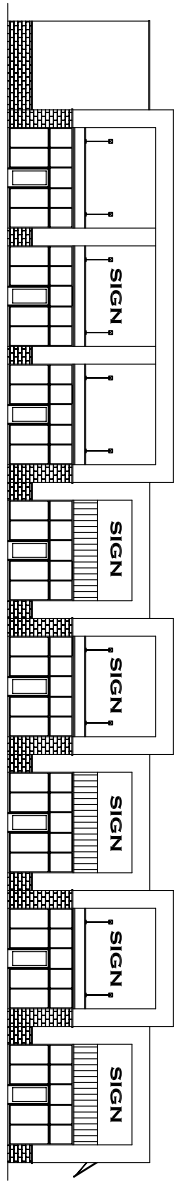
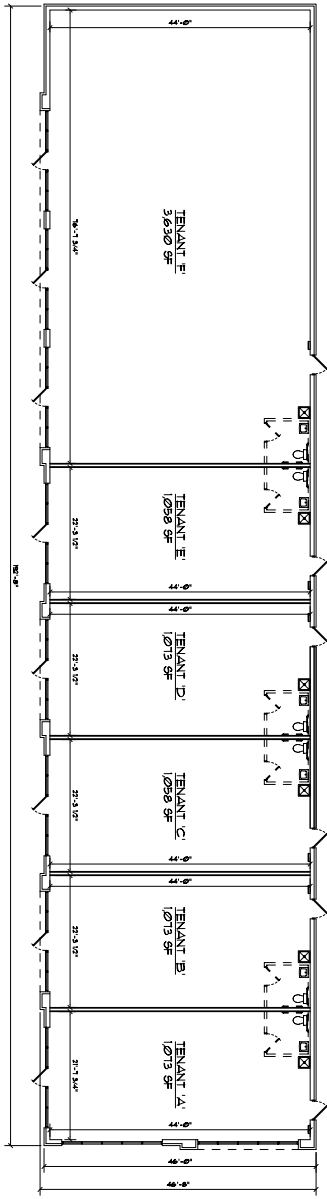
SOUTH BLVD E/RING RD

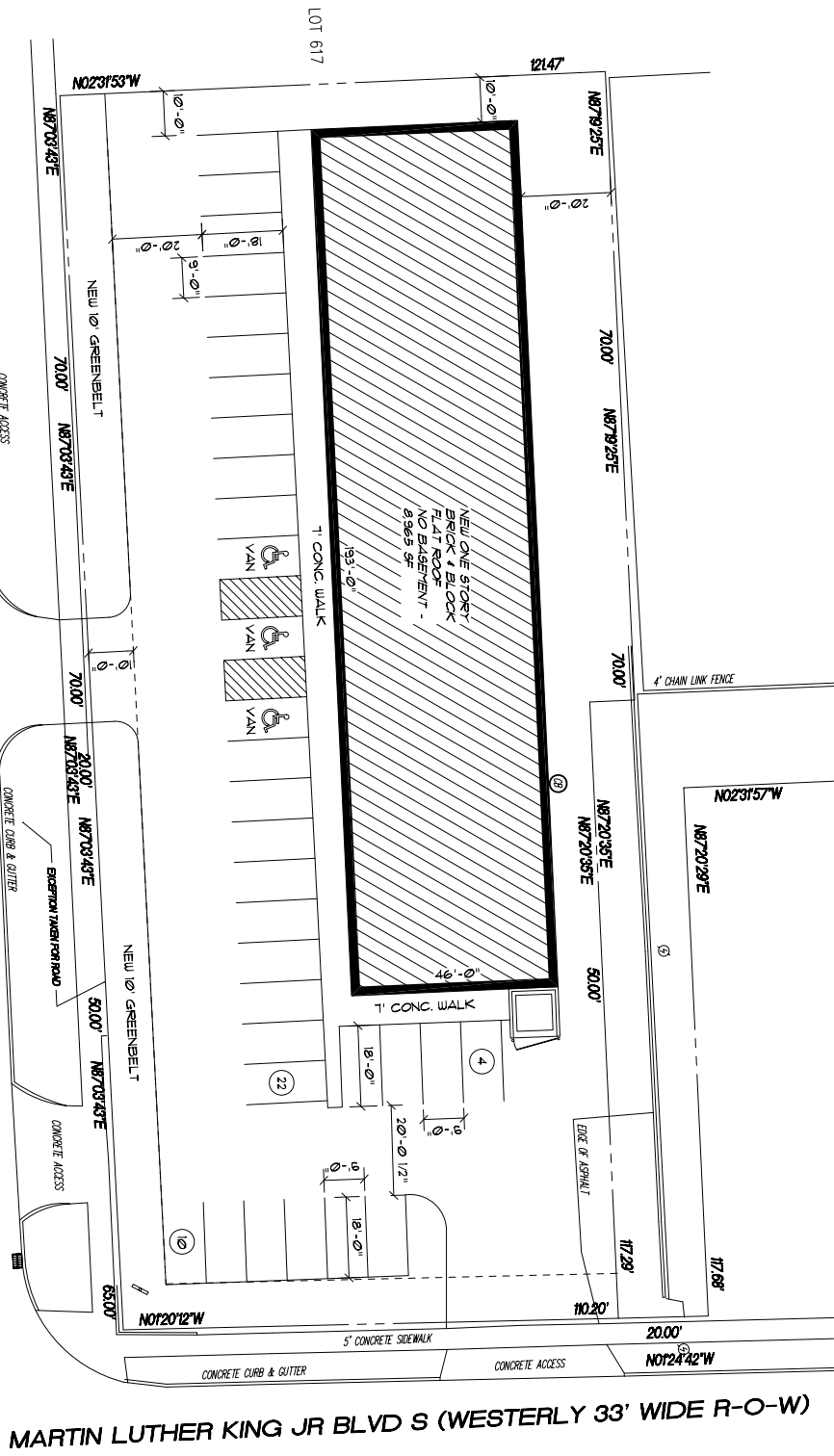
DAILY TRAFFIC

13,487

MLK JR BLVD S/CENTRAL AVE

10,169





ARCHITECTURAL SITE PLAN
 SCALE: 1" = 20'
 NORTH