

ICONIC
REAL ESTATE

FOR LEASE

1,700 - 3,400 SQUARE FEET



DETROIT OFFICE SPACE

[CONTACT](#)

KEES JANEWAY

Kees@ICONICdet.com

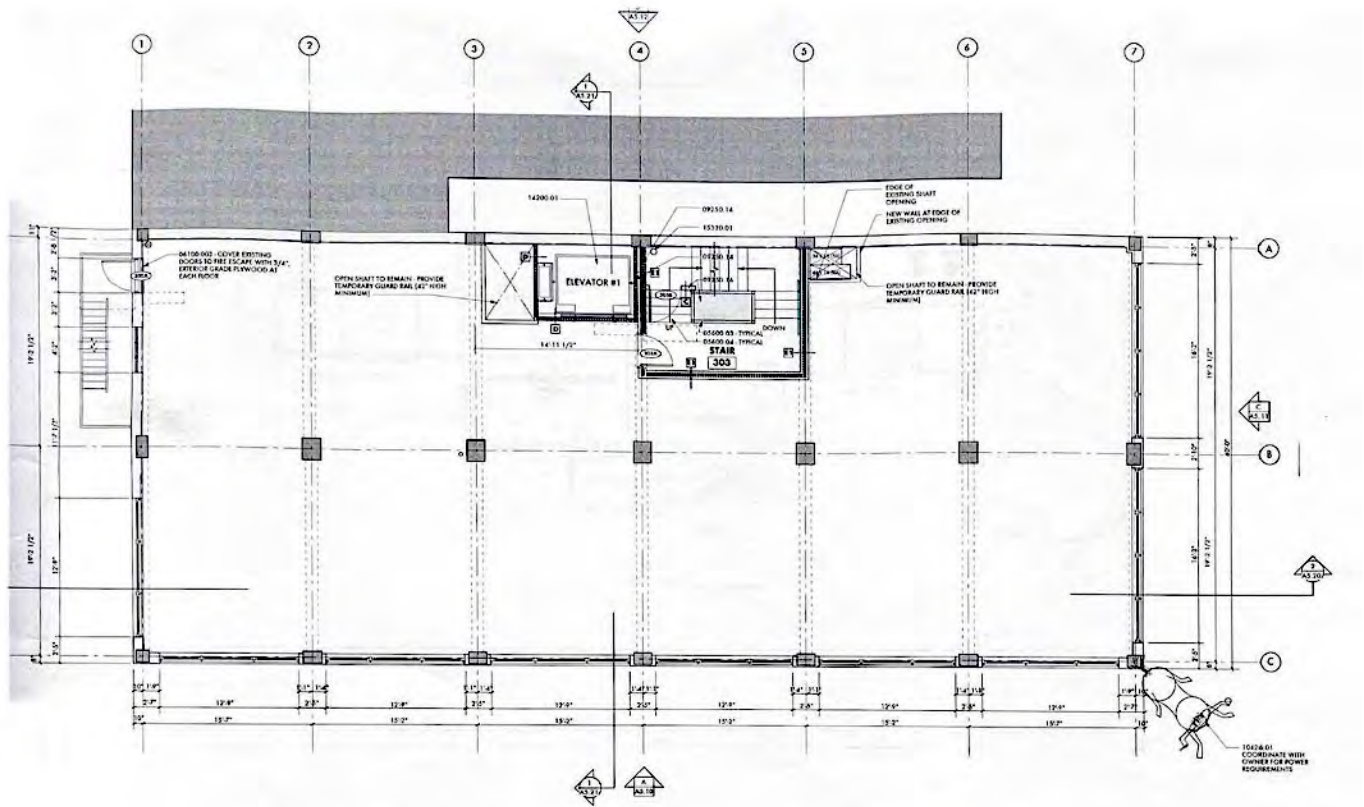
313.603.**ICON**

2233 PARK AVE
DETROIT, MI 48226

PROPERTY FEATURES

- Keycard Access Doors and Elevators
- Footsteps to Starbucks and Elizabeth Street Food & Beverage Options, MGM Casino and Downtown Detroit
- Stained/Polished Concrete Floors
- Abundant Parking
- 10' Ceilings
- Easy Freeway Access
- Kitchenette, Restroom with Shower





① THIRD TO EIGHTH FLOOR PLAN
SCALE: 1/4" = 1'-0"



DEMOGRAPHICS

DAYTIME POPULATION	250,000
HOTEL ROOM COUNT	17,467
FUTURE RESIDENTIAL DEVELOPMENT (UNITS)	700+

ANNUAL VISITORS (CBD)

ENTERTAINMENT	15,000,000+
STADIUMS	3,900,000
FESTIVALS	4,800,000
MAJOR CONFERENCES	1,200,000+