

ICONIC
REAL ESTATE

FOR SALE

37 ACRES



FARMING PROPERTY

CONTACT

JACOB SWORSKI

Jacob@ICONICdet.com

PETAR ELIEFF

PElieff@ICONICdet.com

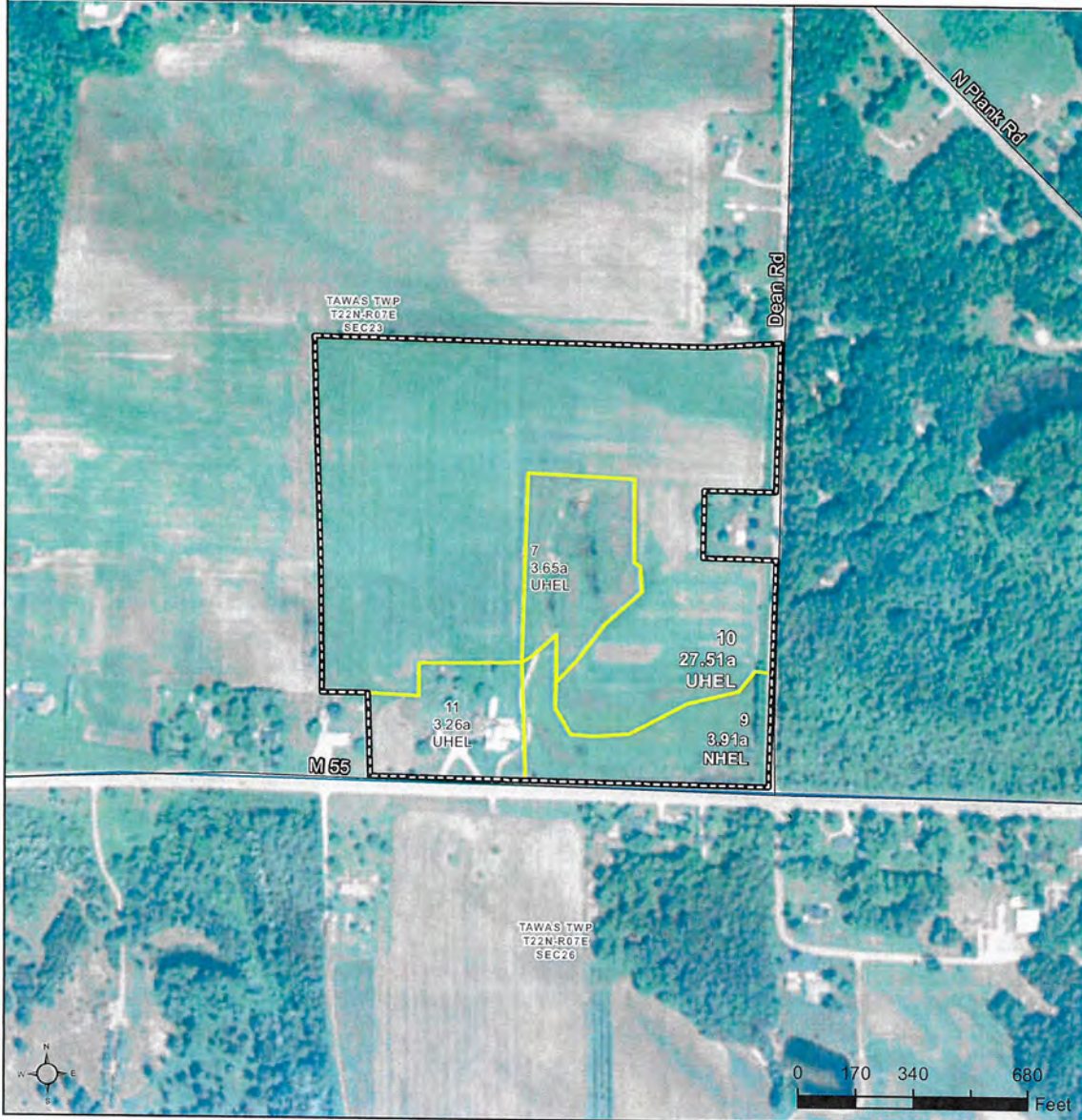
313.603.**ICON**

850 E. M55
TAWAS CITY, MI 48763

PROPERTY FEATURES

- Two Parcels Total of 37 Acres Available
- Located on the main artery leading into Tawas City, MI
- 2,000 feet of frontage on M55
- Zoning: A-1 Agricultural Residential
- 2 miles away from downtown Tawas and Tawas Bay
- Parcel includes: One 2-bedroom 1,100 SF house, one (1) barn, four (4) greenhouses (30' x 100')
- 2 wells on the property
- USDA Supported Use of Property Farming of NON-GMO/Pesticides Produce
- Asking Price: \$450,000.00





- Common Land Unit**
- Common Land Unit
 - Conservation Reserve Program
 - Tract Boundary
 - Section Line

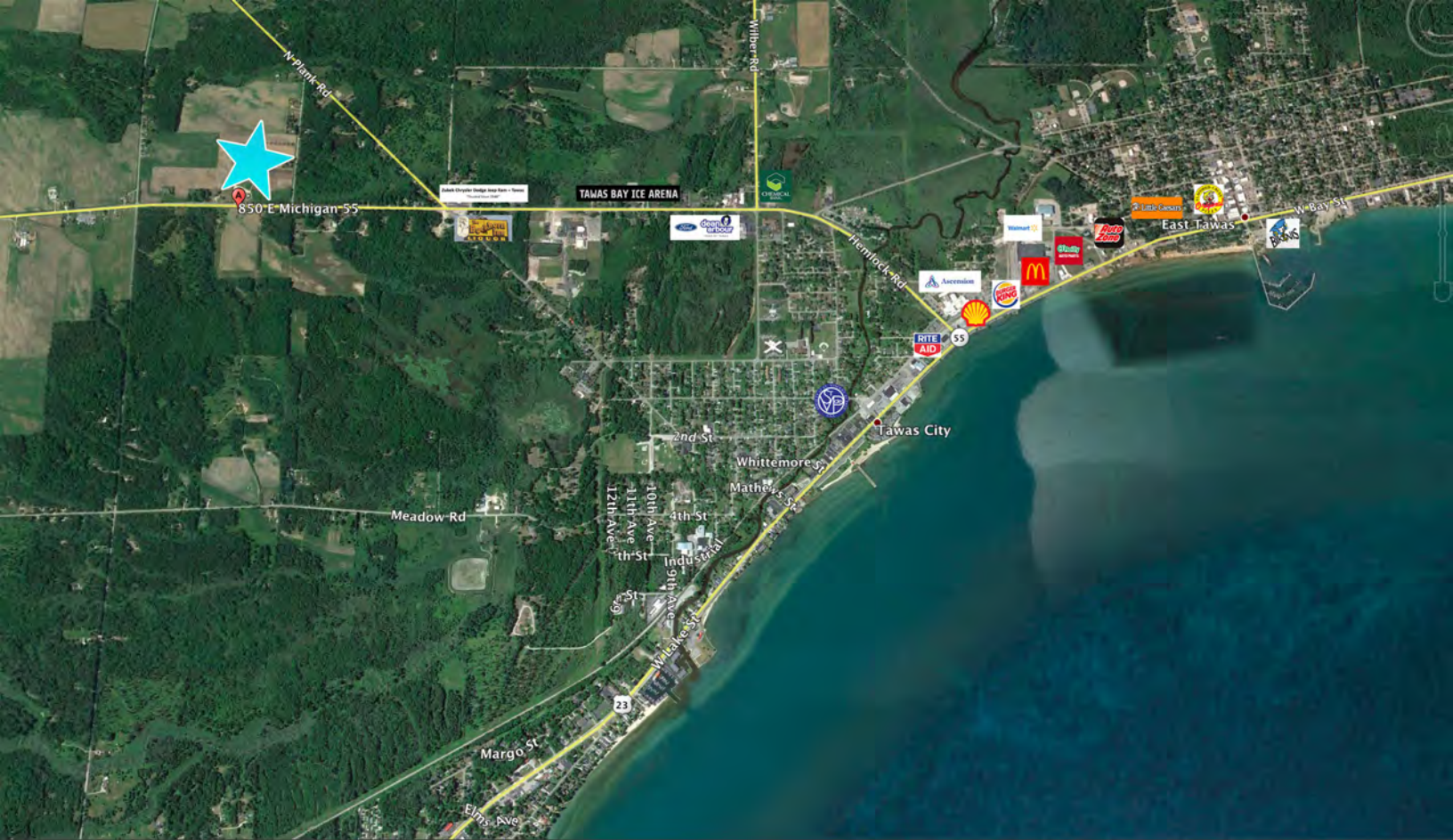
- Wetland Determination Identifiers**
- Restricted Use
 - ▼ Limited Restrictions
 - Exempt from Conservation Compliance Provisions

2016 Program Year
Map Created October 13, 2015
2014 NAIP Imagery

Anschütz

Farm 1874
Tract 564

Cropland CLU's contain white text with a thin black outline; Non-Cropland CLU's contain black text with a thin white outline.
United States Department of Agriculture (USDA) Farm Service Agency (FSA) maps are for FSA Program administration only. This map does not represent a legal survey or reflect actual ownership; rather it depicts the information provided directly from the producer and/or National Agricultural Imagery Program (NAIP) imagery. The producer accepts the data "as is" and assumes all risks associated with its use. USDA-FSA assumes no responsibility for actual or consequential damage incurred as a result of any user's reliance on this data outside FSA Programs. Wetland identifiers do not represent the size, shape, or specific determination of the area. Refer to your original determination (CPA-026 and attached maps) for exact boundaries and determinations or contact USDA Natural Resources Conservation Service (NRCS).



DEMOGRAPHICS

DISTANCE	POPULATION	AVERAGE AGE	TOTAL HOUSEHOLDS	HH INCOME
1 MILE	2,274	44.20	42	\$51,250
3 MILE	7,270	50.40	1,287	\$49,416

DAILY TRAFFIC COUNTS

ROADS

DAILY TRAFFIC

M 55 WEST/BISCHOFF RD N

5,011

STATE HWY 55/SCHOOL DR E

6,685