

ICONIC
REAL ESTATE

FOR LEASE

1,663 SQUARE FEET



**MEDICAL/OFFICE
SPACE**

[CONTACT](#)

KEES JANEWAY

Kees@ICONICdet.com

313.603.**ICON**

THE PARK SHELTON
15 E. KIRBY STREET
DETROIT, MI 48202

PROPERTY FEATURES

- Office/Medical Space Available
- In the heart of Midtown
- Adjacent to Detroit Institute of Arts, Detroit Public Library and Detroit Historical Museum
- 227 unit condominium building
- Key Ground Floor Tenants: Wasabi, Chartreuse, Babo and State Farm
- Area traffic generators: Detroit Institute of Arts, Wayne State University, College for Creative Studies, DMC campus, Shinola and many more Midtown retailers
- Located at QLine station Ferry Street
- Onsite Public Garage Parking

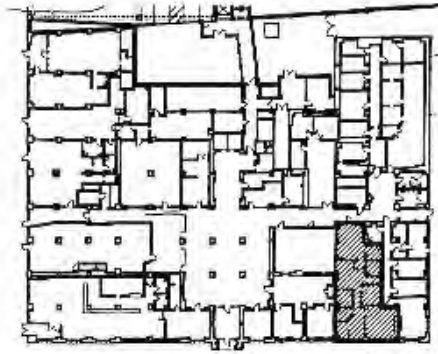


PARK SHELTON INTERIOR PHOTOS



**THE SHOPS @
THE PARK SHELTON**

SUITE #102

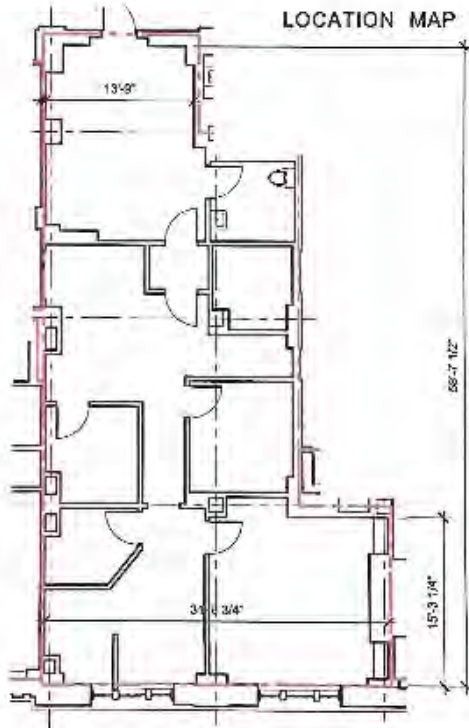


LOCATION MAP

NORTH

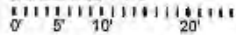


WOODWARD AVENUE



SUITE #102

SCALE: 3/32" = 1'-0"



E. KIRBY STREET



DEMOGRAPHICS

DISTANCE	POPULATION	AVERAGE AGE	TOTAL HOUSEHOLDS	HH INCOME
1 MILE	14,573	35.40	7,354	\$36,838
3 MILE	116,151	38.20	49,706	\$39,048

DAILY TRAFFIC COUNTS

DAILY TRAFFIC/WOODWARD AVE (WITHIN 0.1 MILES)	23,606
WAYNE STATE STUDENT POPULATION	27,238
DAYTIME POPULATION	80,500
NEARBY RESIDENTIAL DEVELOPMENT (UNITS)	1,500+