

ICONIC
REAL ESTATE

FOR LEASE

**FARWELL BUILDING
LOWER-LEVEL 5,401 SF**



LAST DEVELOPED
RETAIL SPACE IN
CAPITOL PARK

CONTACT

KEES JANEWAY

Kees@ICONICdet.com

313.603.**ICON**

1249 GRISWOLD STREET
DETROIT, MI 48226

PROPERTY FEATURES

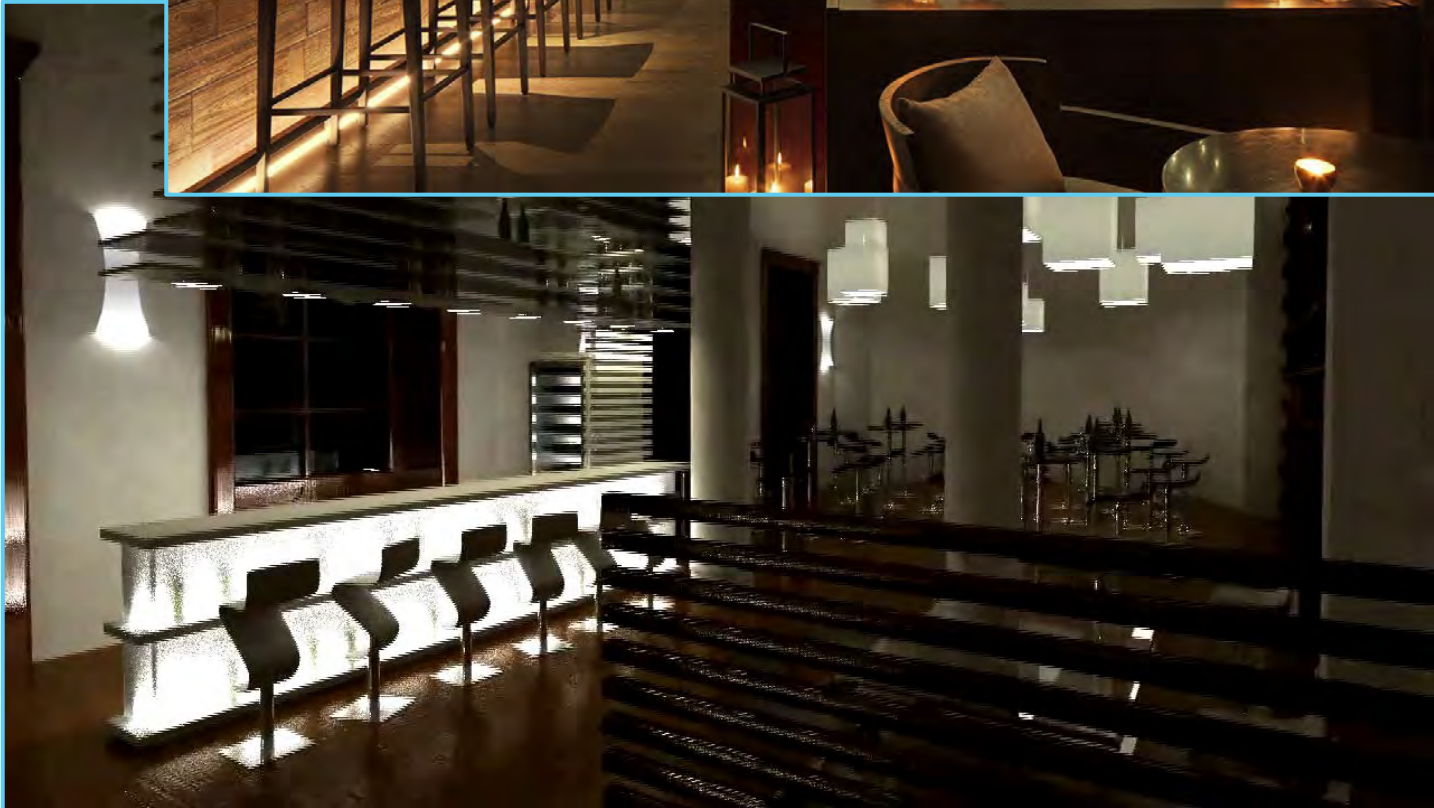
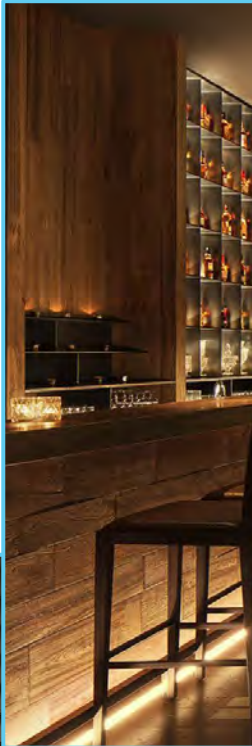
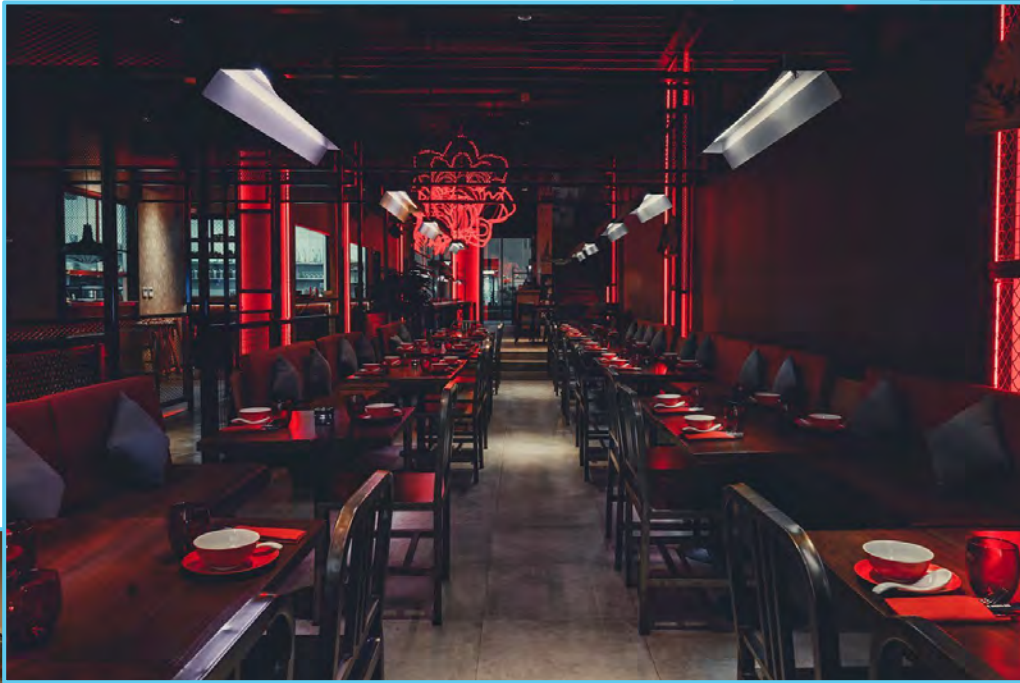
- In the heart of Capitol Park
- Impeccable potential for nightlife
- The Farwell Building Tenants include Leila, Xhibition, Rehmann Robson
- Exterior signage opportunity available
- 12' ceiling height, dedicated entry
- Tenant/Valet parking available
- Shell delivery completed
- Footsteps to Campus Martius, Rising Hudson's Building, Shinola Hotel, Detroit Riverwalk
- Lease Rate: Contact Broker

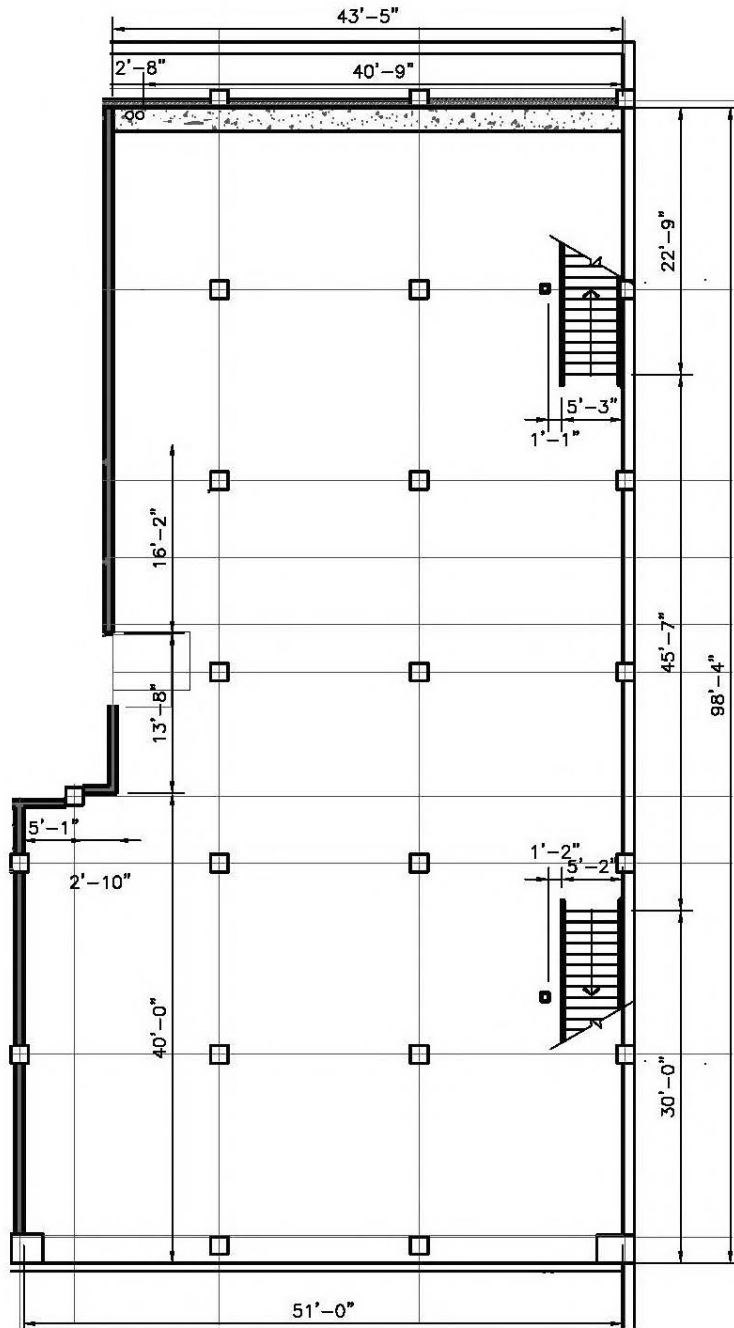






RENDERINGS







DEMOGRAPHICS

DAYTIME POPULATION	250,000
HOTEL ROOM COUNT	17,467
FUTURE RESIDENTIAL DEVELOPMENT (UNITS)	700+

ANNUAL VISITORS (CBD)

ENTERTAINMENT	15,000,000+
STADIUMS	3,900,000
FESTIVALS	4,800,000
MAJOR CONFERENCES	1,200,000+