

ICONIC
REAL ESTATE

FOR LEASE

2ND FLOOR 4,169 SF
4TH FLOOR 4,913 SF



DETROIT OFFICE SPACE

[CONTACT](#)

KEES JANEWAY

Kees@ICONICdet.com
313.603.ICON

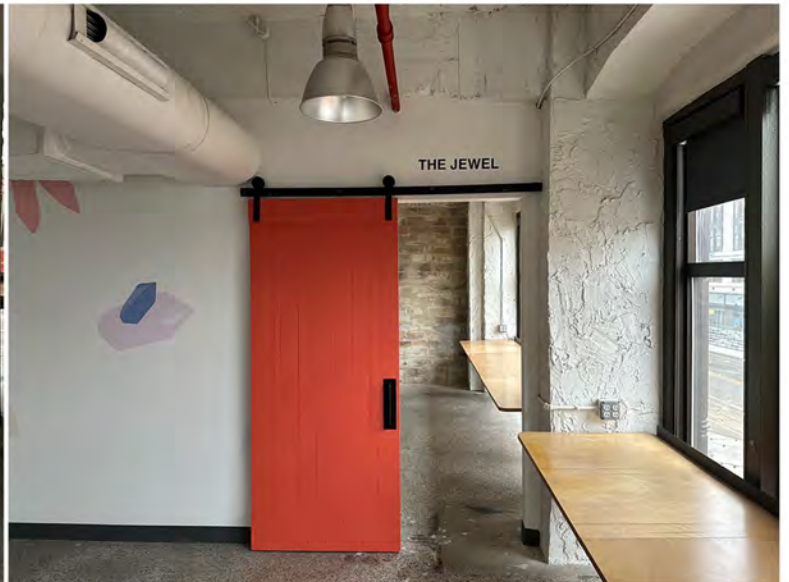
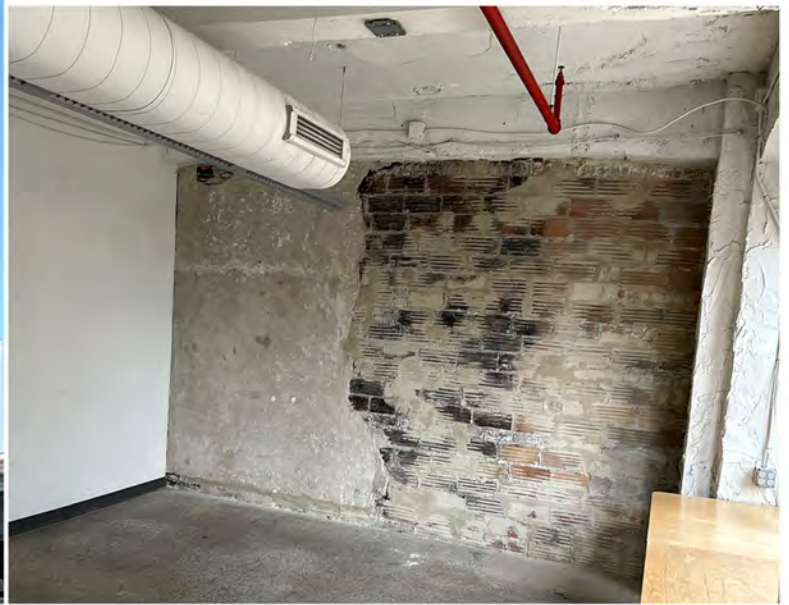
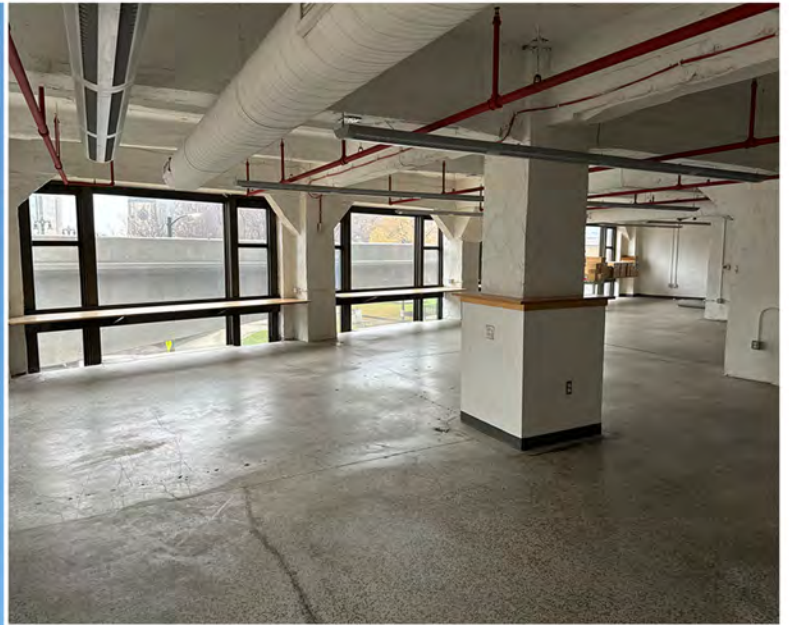
BRODERICK TOWER
1570 WOODWARD AVE.
DETROIT, MI 48226

PROPERTY FEATURES

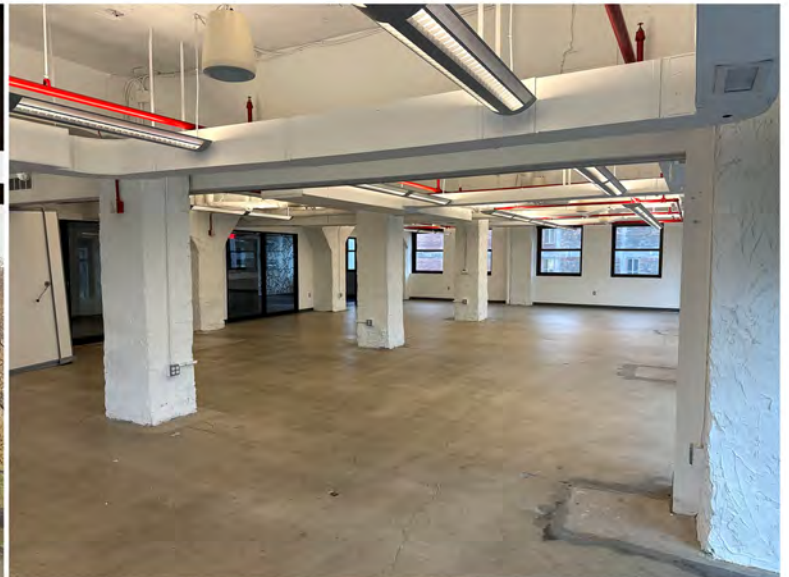
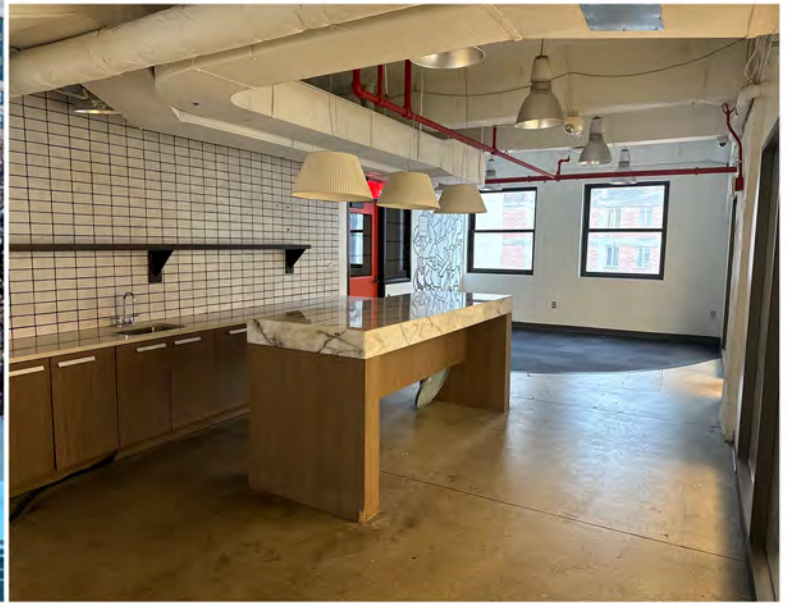
- Office Space For Lease in the center of Downtown Detroit at Grand Circus Park and Woodward Avenue
- 2nd Floor - 4,169 SF | 4th Floor - 4,913 SF
- Within the 34-story skyscraper (a historic landmark) providing luxury residences with panoramic views
- Walking distance to stadiums, restaurants, entertainment venues and theater district
- Parking Available at \$252.00/space per month
- Lease Rate: \$23.00/PSF
Plus Electric/Insurance/Parking



BRODERICK TOWER - 2ND FLOOR PHOTOS



BRODERICK TOWER- 4TH FLOOR PHOTOS





DEMOGRAPHICS

| | |
|--|---------|
| DAYTIME POPULATION | 250,000 |
| HOTEL ROOM COUNT | 17,467 |
| FUTURE RESIDENTIAL DEVELOPMENT (UNITS) | 700+ |

ANNUAL VISITORS (CBD)

| | |
|-------------------|-------------|
| ENTERTAINMENT | 15,000,000+ |
| STADIUMS | 3,900,000 |
| FESTIVALS | 4,800,000 |
| MAJOR CONFERENCES | 1,200,000+ |