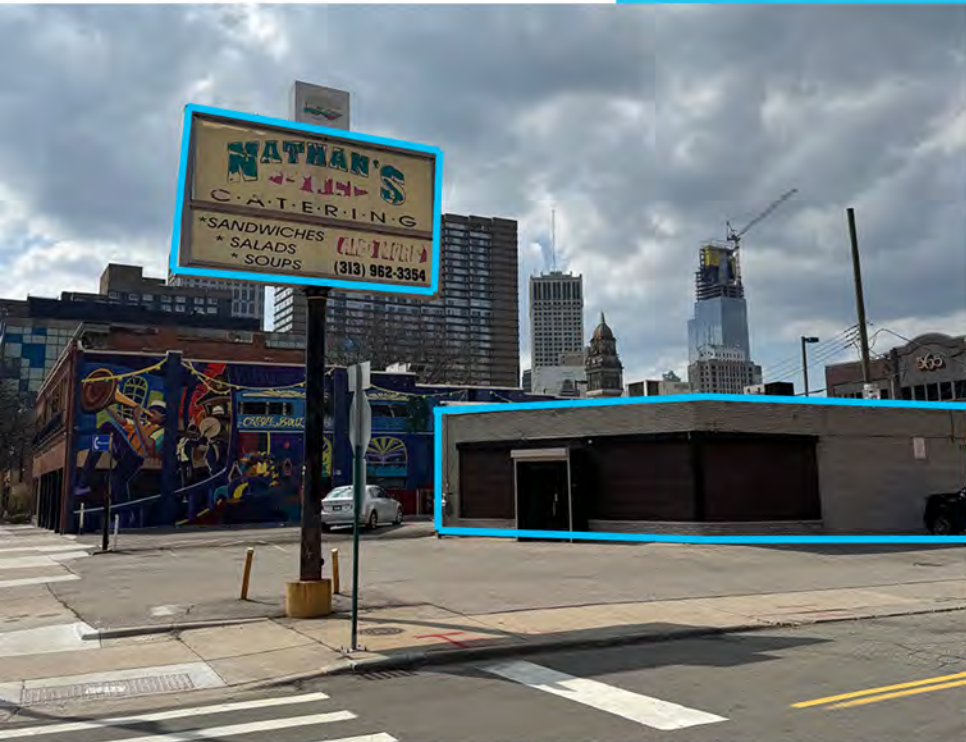


ICONIC
REAL ESTATE

FOR LEASE

1,525 SQUARE FEET



DETROIT RESTAURANT SPACE

[CONTACT](#)

KEES JANEWAY

Kees@ICONICdet.com
313.603.ICON

581 E. JEFFERSON AVE.
DETROIT, MI 48226

PROPERTY FEATURES

- Located on Jefferson Ave. across from the Iconic Renaissance Center in downtown Detroit
- 1,525 SF Freestanding Retail Building
- Existing hood, walk-in cooler, restroom - very clean
- New motorized metal roll top storefront cover
- Proximity to Greektown, Comerica Park, Ford Field, Campus Martius, Blue Cross Blue Shield, Detroit Riverwalk and parks, and many more attractions
- Monument signage available
- 12 onsite parking spaces
- Lease Rate: Contact Broker



ICONICREALESTATE.COM

313.603.ICON

ADDITIONAL PHOTOS





DEMOGRAPHICS

DAYTIME POPULATION	250,000
HOTEL ROOM COUNT	17,467
FUTURE RESIDENTIAL DEVELOPMENT (UNITS)	700+

ANNUAL VISITORS (CBD)

ENTERTAINMENT	15,000,000+
STADIUMS	3,900,000
FESTIVALS	4,800,000
MAJOR CONFERENCES	1,200,000+