

**ICONIC**  
REAL ESTATE

# FOR LEASE

**4,500 SQUARE FEET**



## BIRMINGHAM OFFICE SPACE

[CONTACT](#)

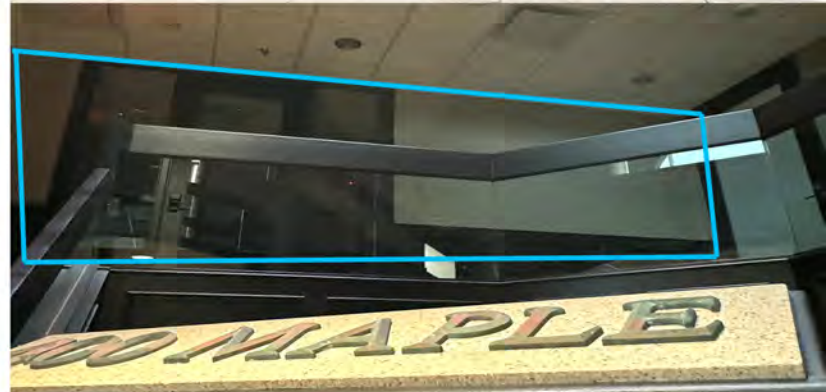
**KEES JANEWAY**

Kees@ICONICdet.com  
313.603.ICON

400 W. MAPLE ROAD  
BIRMINGHAM, MI 48009

## PROPERTY FEATURES

- 4,500 SF Birmingham Office Space
- 2nd Floor Suite Available
- Across from the Chester Street Parking Structure
- Next to One Stream
- 5 miles to I-75 fwy/4 miles to 696 fwy
- Easy access to Birmingham Nature Trails, Shain Park, Birmingham Library, downtown Birmingham restaurants and retail
- Lease Rate: Contact Broker

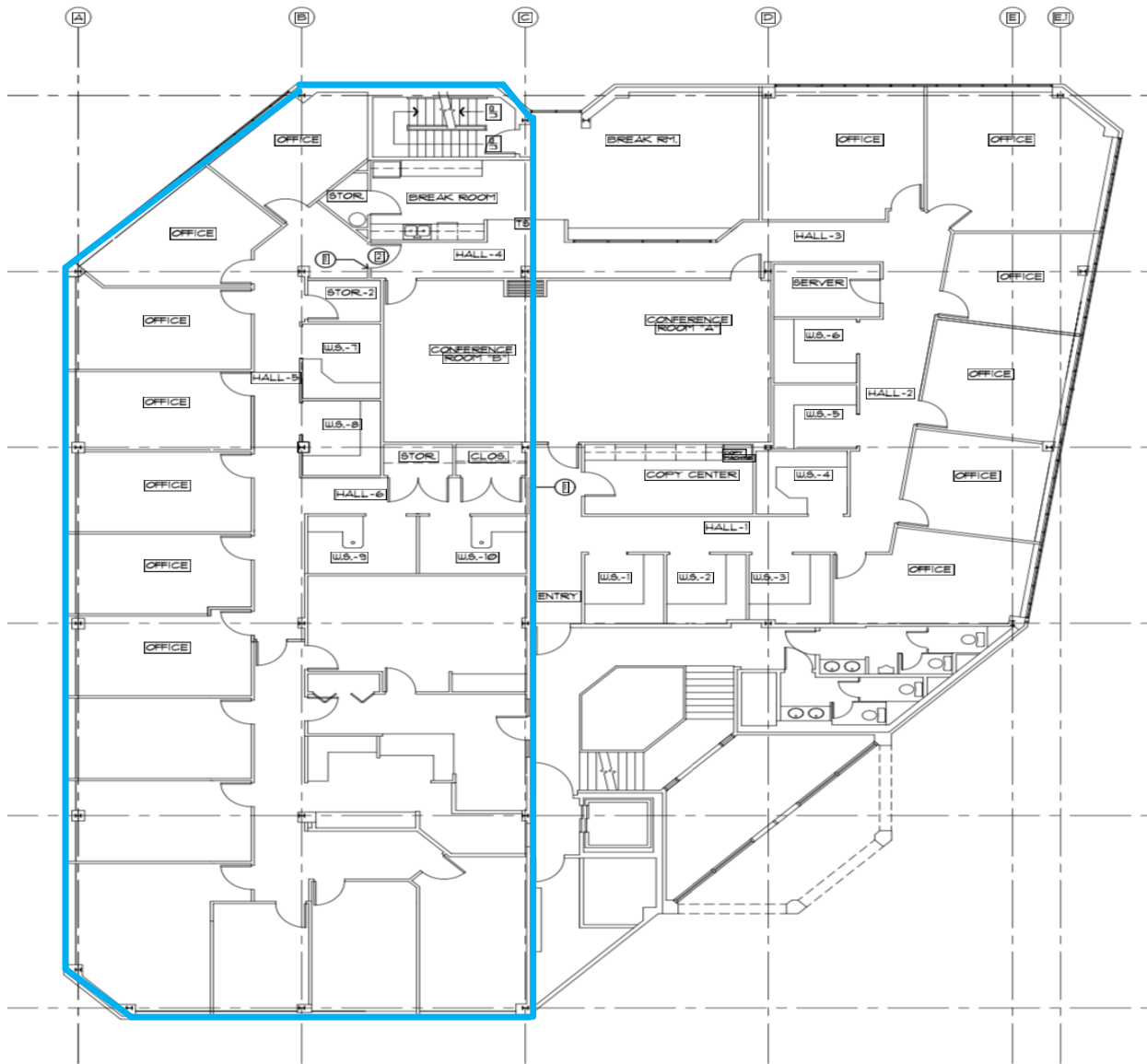




# 400 W. MAPLE ROAD INTERIOR PHOTOS







SECOND LEVEL FLOOR PLAN

SCALE: 1/8" = 1'-0"



## DEMOGRAPHICS

DISTANCE	POPULATION	AVERAGE AGE	TOTAL HOUSEHOLDS	HH INCOME
1 MILE	13,672	45.10	6,008	\$168,614
3 MILE	81,685	43.60	35,387	\$107,044

## DAILY TRAFFIC COUNTS

### ROADS

MAPLE RD/OLD WOODWARD AVE

W MAPLE RD/N CHESTER ST E

### DAILY TRAFFIC

25,824

17,122