

ICONIC
REAL ESTATE

FOR SALE

**14,700 SQUARE FEET +/-
1.18 ACRE LOT**

\$5,000 BROKER BONUS



INDUSTRIAL BUILDING

[CONTACT](#)

JACOB SWORSKI

Jacob@ICONICdet.com
313.603.ICON

19285 CONANT STREET
DETROIT, MI 48234

PROPERTY FEATURES

- 14,700 SF +/- Industrial Building
- NW Corner of Conant St. & Emery St.
- Zoning: B4
- One mile away from I-75
- Gated & secured parking lot with electric gate entrance
- 5,000 SF currently built out
- Asking Price: Contact Broker



ICONICREALESTATE.COM

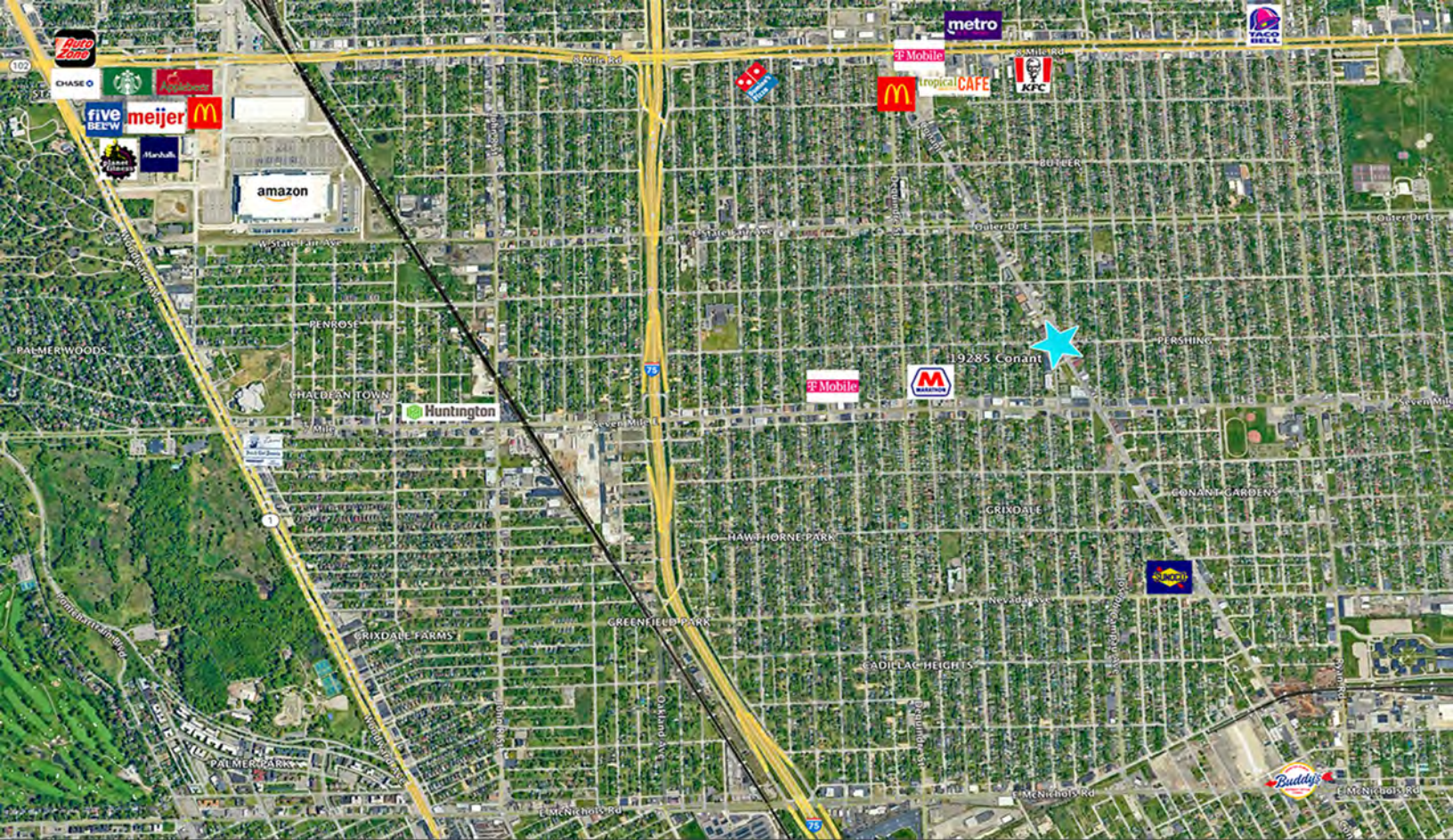
313.603.ICON

FLOOR PLAN



AERIAL





DEMOGRAPHICS

DISTANCE	POPULATION	AVERAGE AGE	TOTAL HOUSEHOLDS	HH INCOME
1 MILE	18,222	36.60	6,798	\$32,739
3 MILE	129,363	36.60	47,830	\$34,357

DAILY TRAFFIC COUNTS

ROADS

CONANT ST/HILDALE ST E NW

DAILY TRAFFIC

11,883

E OUTER DRIVE/GODDARD AVE E

13,594