

## FREESTANDING RETAIL SPACE

27452 WOODWARD AVE  
ROYAL OAK, MI 48067



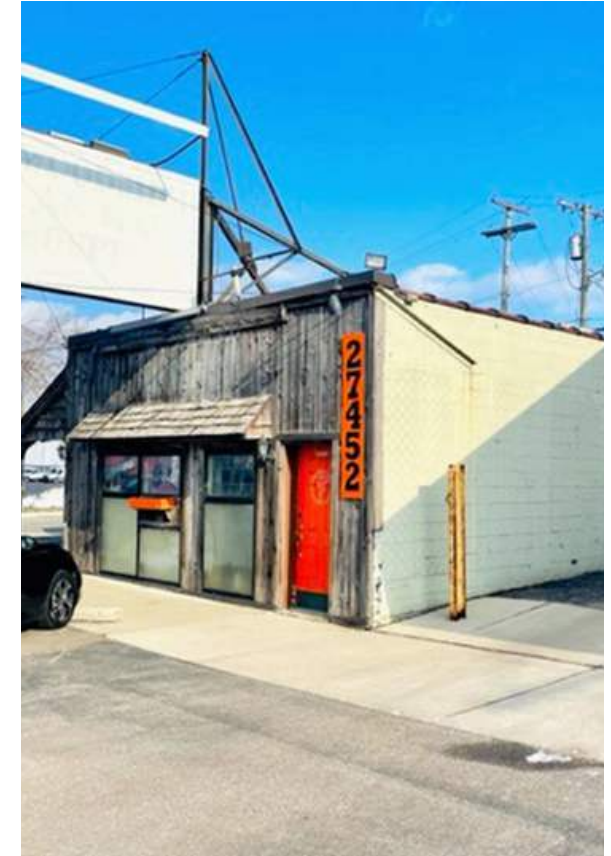
FOR LEASE

1,727 SQUARE FEET  
AVAILABLE

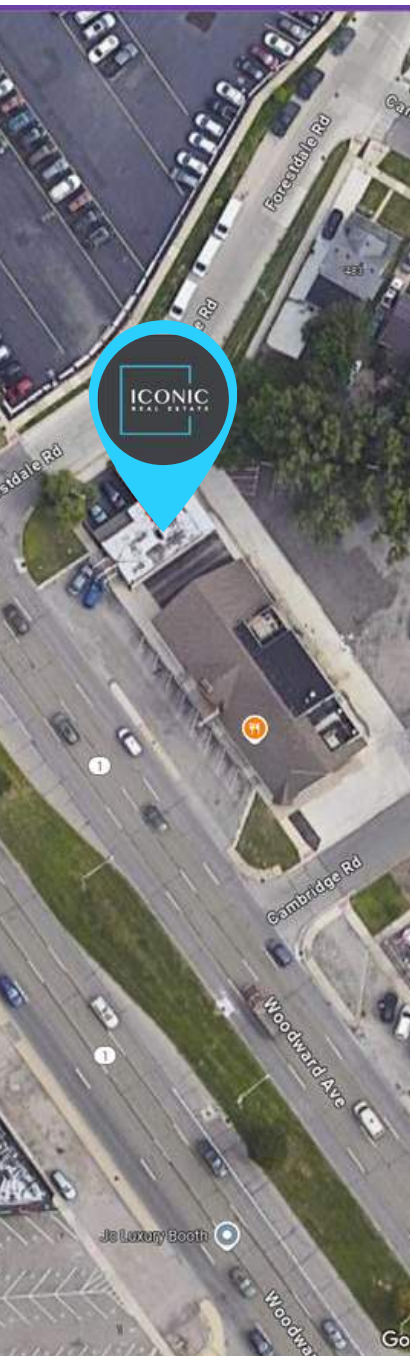


## PROPERTY FEATURES:

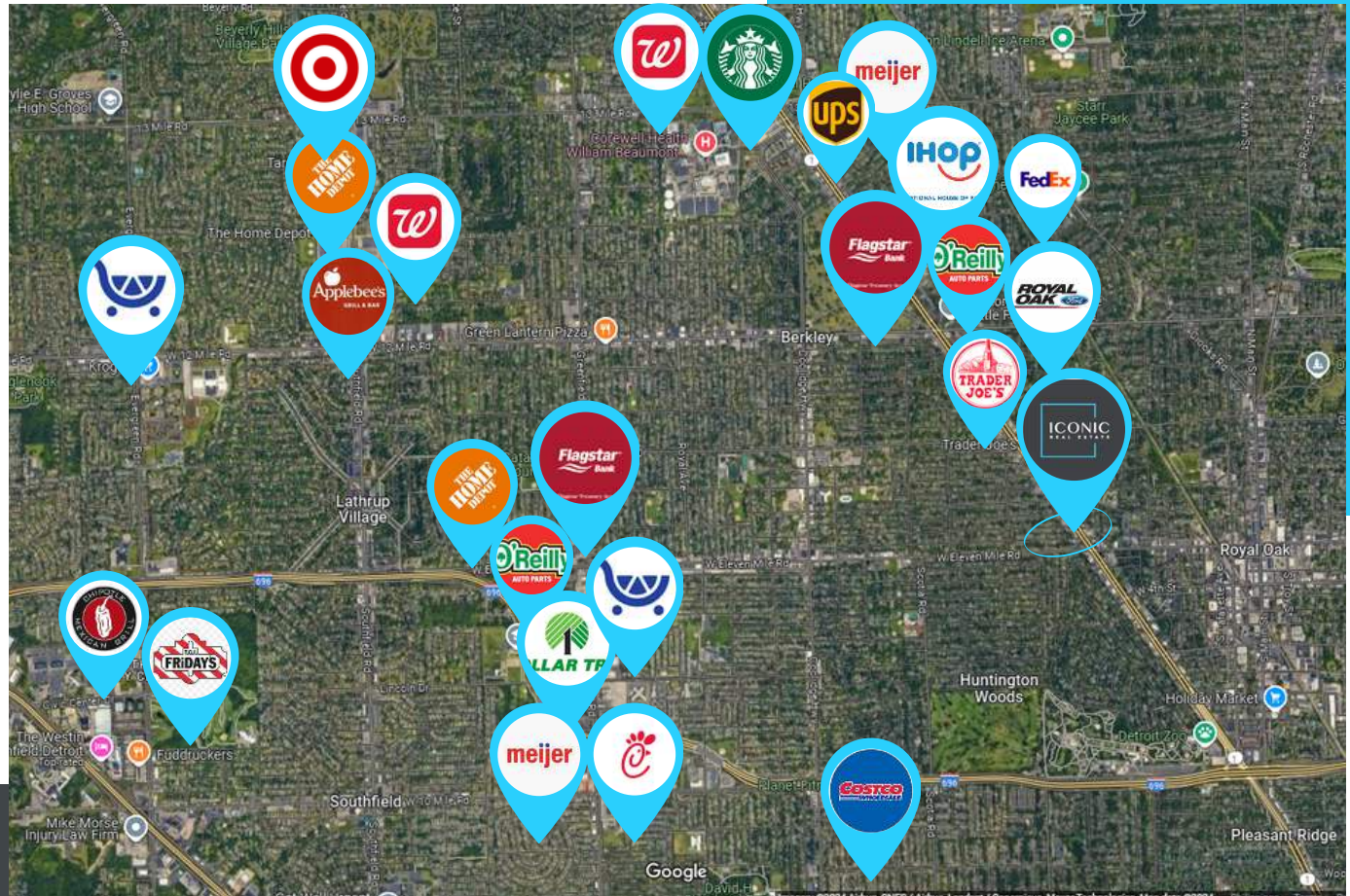
- Former Veterinary Clinic – fully demised interior
- Northeast corner of Woodward Ave. & Forestdale Rd.
- Located next to the ICONIC Sign of the Beefcarver
- Nearby national retailers include: Trader Joe's, Pet Smart & O'Reilly Auto
- 1.5 miles from I-696 freeway
- Surrounded by a dense residential neighborhood
- Lease Rate: Contact Broker







THE PROPERTIES THAT  
DEFINE YOUR BUSINESS,  
ARE OUR BUSINESS.



313-603-ICON (4266)



## Contact Us

-  Broker  
Jacob Sworski
-  Email  
[jacob@ICONICdet.com](mailto:jacob@ICONICdet.com)
-  Website  
[www.iconicrealestate.com](http://www.iconicrealestate.com)
-  Address  
300 E. Long Lake Road, Ste. 280  
Bloomfield Hills, MI 48304

## WHY ICONIC?

Detroit is our home, and we know how to find the right space for your business to thrive. With **ICONIC**, you get local expertise and a perfect fit for your brand. Let us turn your vision into reality—because the right location makes all the difference.

# DEMOGRAPHICS

DISTANCE	1 MILE	3 MILE
POPULATION	17,274	174,978
AVERAGE AGE	40.70	39.70
HOUSEHOLDS	7,976	66,286
HH INCOME	\$104,143	\$75,899

# TRAFFIC COUNTS

LARKMOOR BLVD/WOODWARD AVE E.	65,330
WOODWARD EVE/11 MILE RD NW	64,101

