

LAST DEVELOPED RETAIL SPACE IN CAPITOL PARK

1249 GRISWOLD STREET
DETROIT, MI 48226



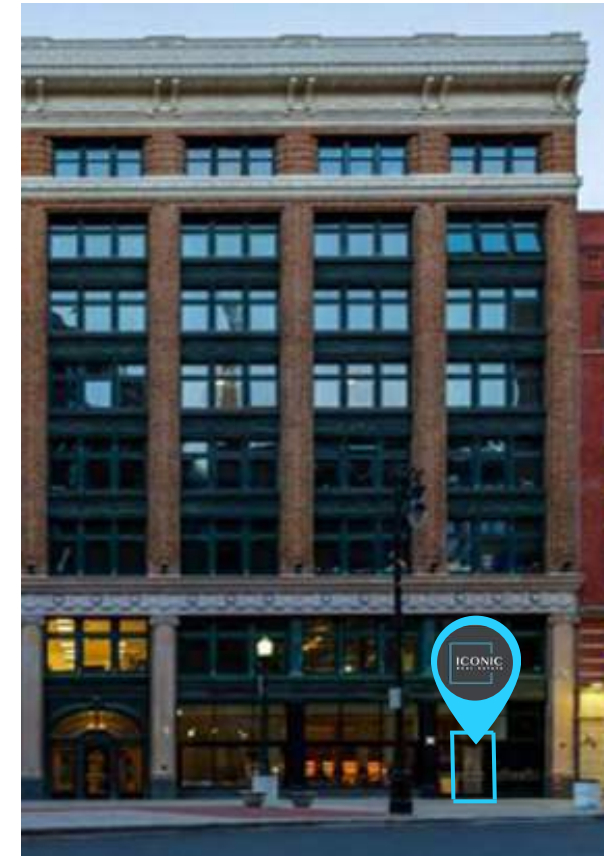
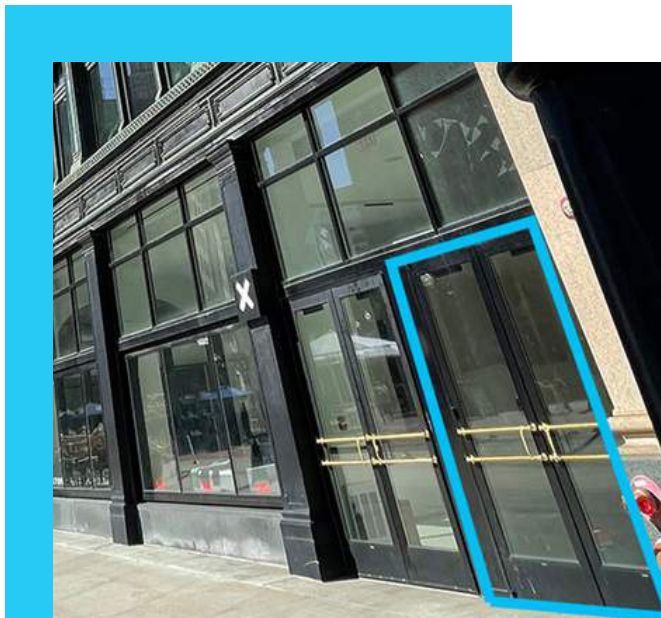
FOR LEASE

5,401 SQUARE FEET
FARWELL BLDG.
LOWER-LEVEL

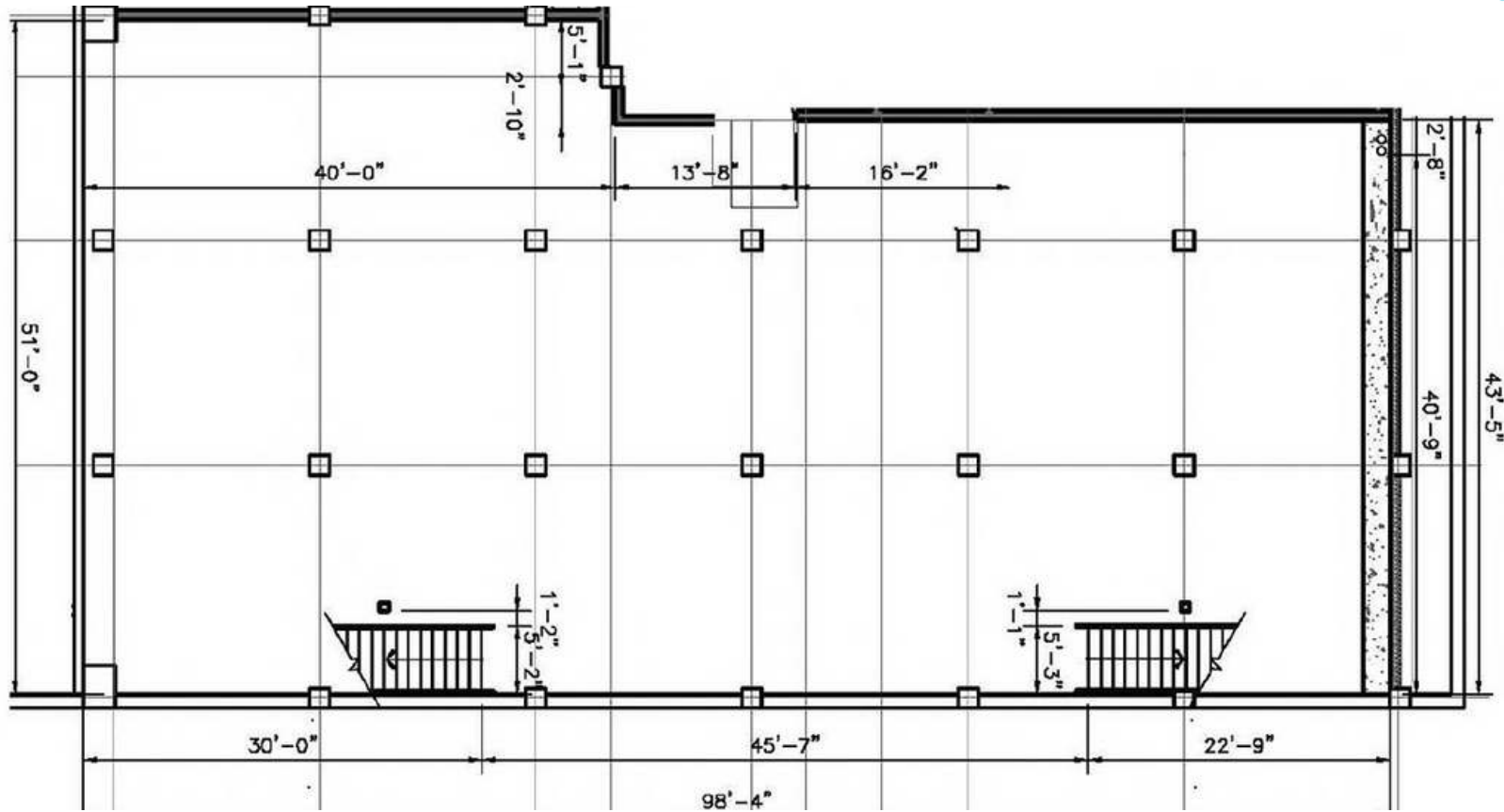


PROPERTY FEATURES:

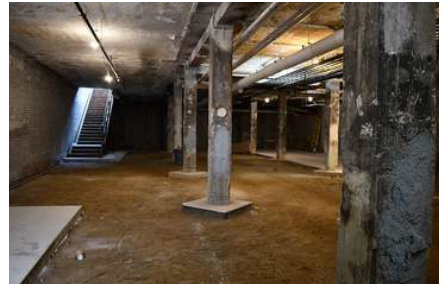
- In the heart of Capitol Park
- Impeccable potential for nightlife
- The Farwell Building Tenants include Leila, Xhibition, Rehmann Robson
- Exterior signage opportunity available
- 12' ceiling height, dedicated entry
- Tenant/Valet parking available
- Shell delivery completed
- Footsteps to Campus Martius, Rising Hudson's Building, Shinola Hotel, Detroit Riverwalk
- Lease Rate: Contact Broker



THE PROPERTIES THAT
DEFINE YOUR BUSINESS,
ARE OUR BUSINESS.

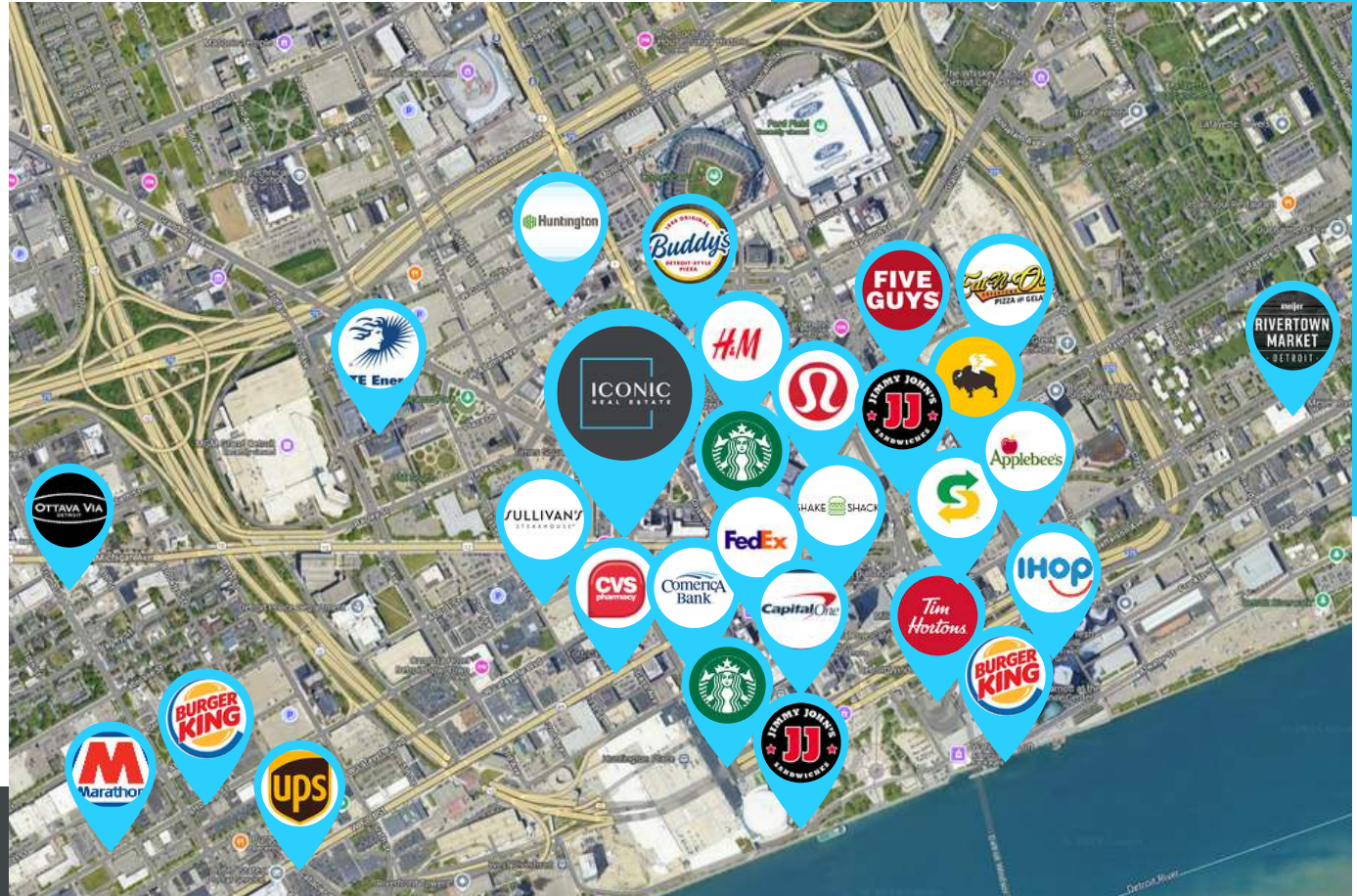


RESIDENTIAL FLOORS 3-8 68,860 SQ. FT.	
REHMANN 2ND FLOOR 11,612 SQ. FT.	
LEILA 1ST FLOOR LOWER LEVEL 8,933 SQ. FT.	XHIBITION 1ST FLOOR 4,407 SQ. FT.
AVAILABLE LOWER LEVEL 5,401 SQ. FT.	









313-603-ICON (4266)



Contact Us

-  Broker
Kees Janeway
-  Email
kees@ICONICdet.com
-  Website
www.iconicrealestate.com
-  Address
300 E. Long Lake Road, Ste. 280
Bloomfield Hills, MI 48304

WHY ICONIC?

Detroit is our home, and we know how to find the right space for your business to thrive. With **ICONIC**, you get local expertise and a perfect fit for your brand. Let us turn your vision into reality—because the right location makes all the difference.

DEMOGRAPHICS

DAYTIME POPULATION	250,00
HOTEL ROOM COUNT	17,467
FUTURE RESIDENTIAL DEVELOPMENT	700+

ANNUAL VISITORS

ENTERTAINMENT	15,000,000+
STADIUMS	3,900,000
FESTIVALS	4,800,000
MAJOR CONFERENCES	1,200,000+

